



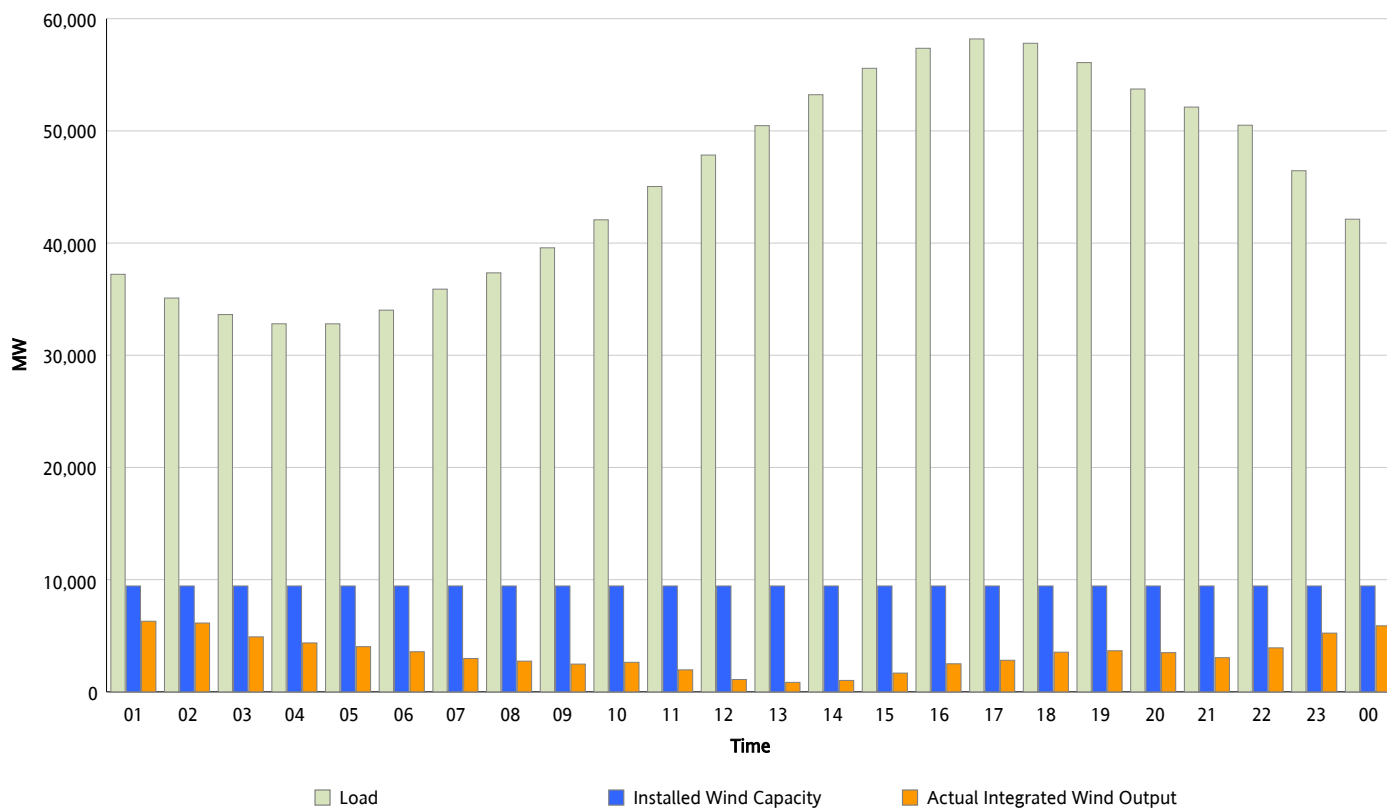
## ERCOT Grid Operations

### Wind Integration Report : 06/04/2012

Peak Load	58,196 MW
Load Peak Hour (HE)	17
Wind Over Peak	2,815 MW
Wind Record 04/13/12	7,925 MW
Max Wind Value*	6,458 MW
Wind Peak Time	01:16
Wind Integration %	18.15 %

#### Hourly Average Actual Load vs. Actual Wind Output

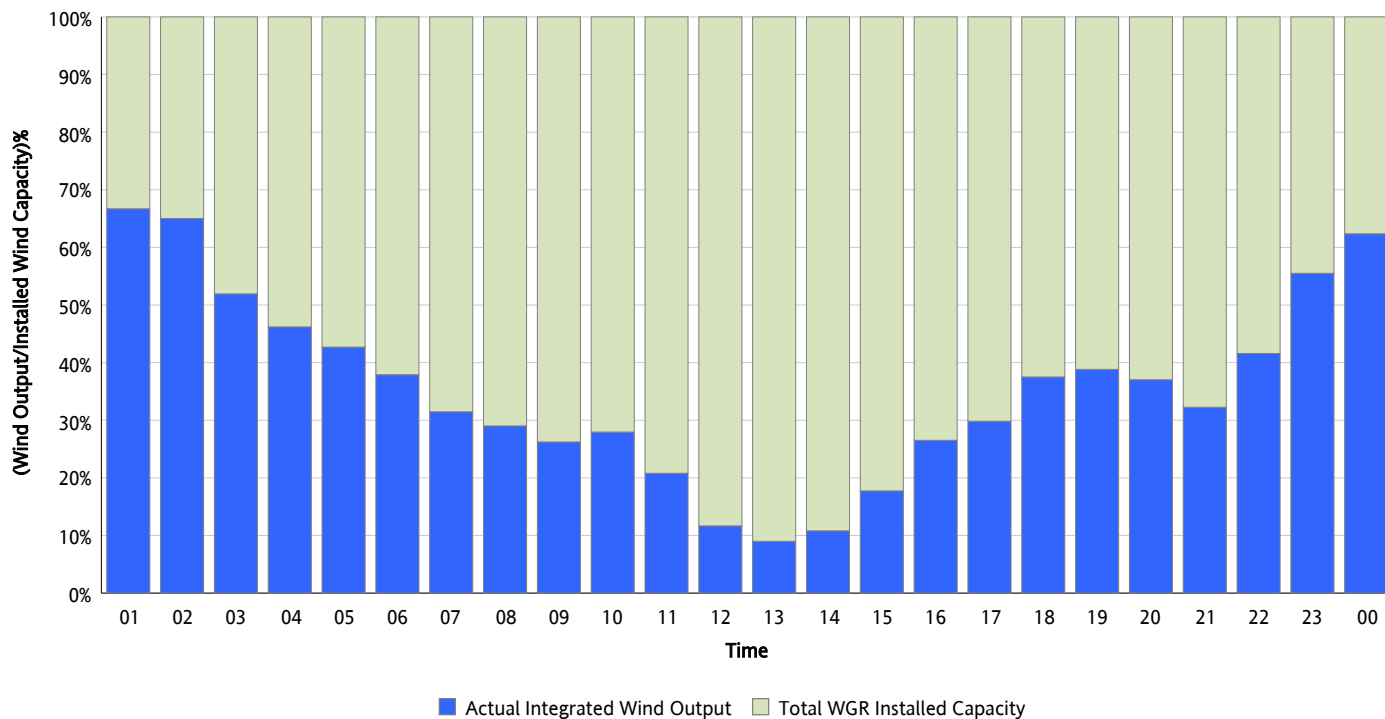
06/04/2012



\* Wind Record and Wind Max represent instantaneous values and the rest of the values are integrated over the hour

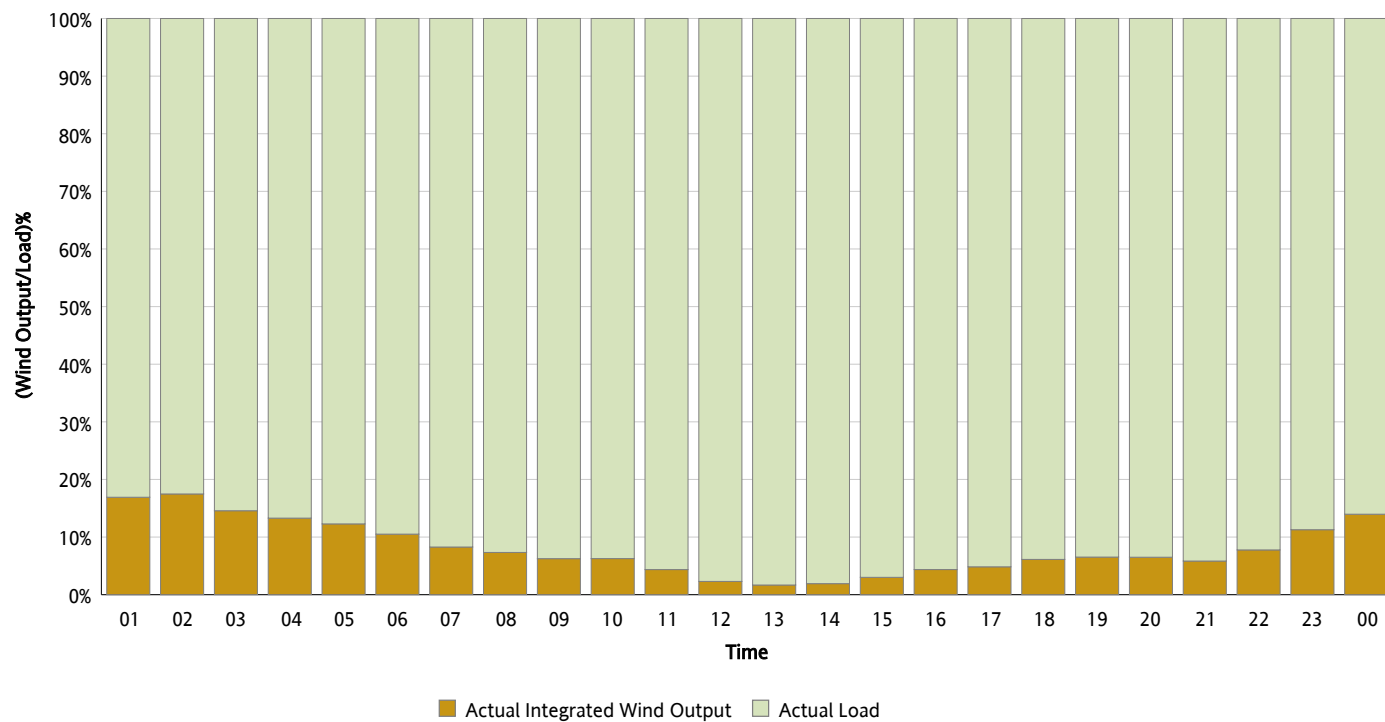
## Actual Wind Output as a Percentage of the Total Installed Wind Capacity

06/04/2012



## Actual Wind Output as a Percentage of the ERCOT Load

06/04/2012



## ERCOT Load vs. Actual Wind Output

05/28/2012 - 06/04/2012

